

Pyramidal open cell ceiling

The first KRAFT production line for suspended ceilings was launched in 2012. As of 2025, we manufacture more than 45 types and modifications of suspended ceilings, a lighting system of our own design, acoustic and mesh panels, and more.

### KRAFT SUSPENDED CEILINGS ARE IN WELL-DESERVED DEMAND BECAUSE:

**1**

We use proven raw materials and reliable equipment — as this is the key to the quality and safety of our products.

**2**

All products undergo quality control during production and certification.

**3**

We monitor current trends in the ceiling systems market and constantly implement new products and innovations.

**4**

We continuously expand our product range, which gives our customers the right to choose.

**5**

We offer not just individual products, but comprehensive professional ceiling system solutions.

## НАШІ ПЕРЕВАГИ

### EXPORT



More than 25 countries

### PARTNERS



Representatives and partners in 10 countries

### DESIGN DEPARTMENT



We implement modern ideas

### ENGINEERING OFFICE



Innovative developments

### COMPLETED PROJECTS



Over 1500 projects per year

### CERTIFICATION



Certificates of Ukraine and the EU

### PRODUCTION



Factories in Ukraine and Turkey

### LOGISTICS



Established logistics solutions

### ASSORTMENT



Over 45 types of suspended ceilings

### WAREHOUSE PROGRAM



Popular models in stock

### PERSONNEL



Over 250 employees

### SOFTWARE



Onliner 2.0 — a platform for partners of our own design



## STYLE, VOLUME, DYNAMICS

Pyramidal open cell ceiling is a striking solution for modern interiors. Its volumetric structure creates an expressive play of light and shadow, adding depth and dynamics to the space. This ceiling combines stylish design and functionality, concealing engineering communications and giving the room a unique character.

Thanks to the variety of cell sizes and a wide color palette, the pyramidal open cell ceiling fits harmoniously into projects for shopping centers, offices, restaurants, and public spaces. Reliable materials and a simple installation system make it a practical choice for modern designers and architects.

### ADVANTAGES OF PYRAMIDAL OPEN CELL CEILING

**1. Easy installation and maintenance.** This is especially important for large spaces.

**2. High performance characteristics** — resistance to environmental influences allows pyramidal open cell ceilings to be used even outdoors.

**3. Fire safety class A1** — non-combustible.

**4. The grid structure conceals the ceiling space on one side,** while providing free access to all engineering communications on the other. Additionally, this

structure does not interfere with fire safety systems and helps to quickly remove smoke in case of a fire.

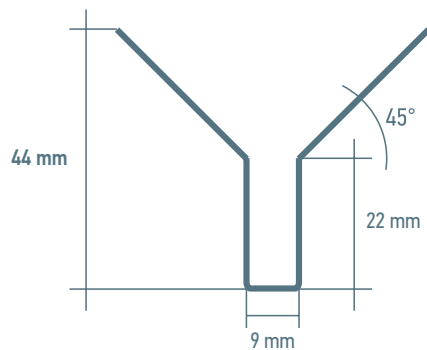
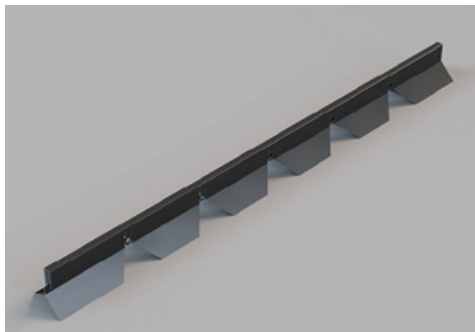
**5. The pyramidal open cell ceiling looks monolithic in the interior.** Thanks to the light weight of the elements, ceiling sagging is excluded.

**6. Pyramidal open cell ceilings offer ample space for creativity and design.** The variety of cell sizes and more than 500 colors in the RAL palette allow for the creation of custom solutions for any space.



## FEATURES OF PYRAMIDAL OPEN CELL CEILING, CELL SIZES

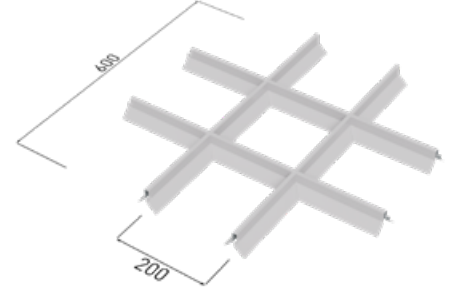
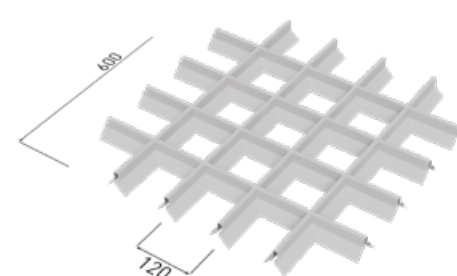
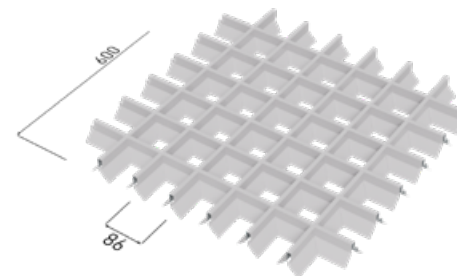
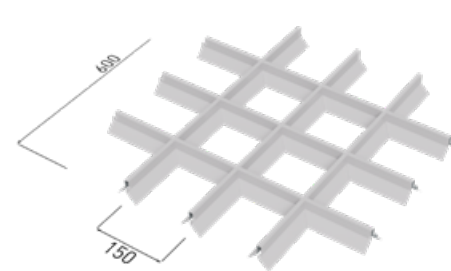
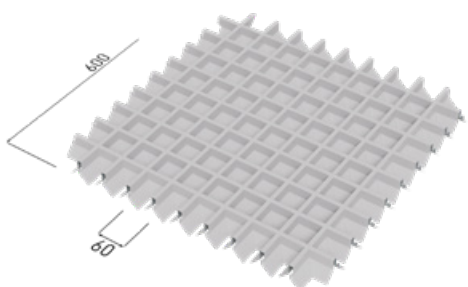
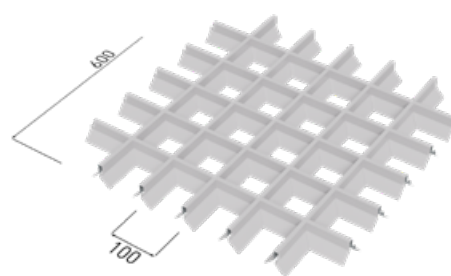
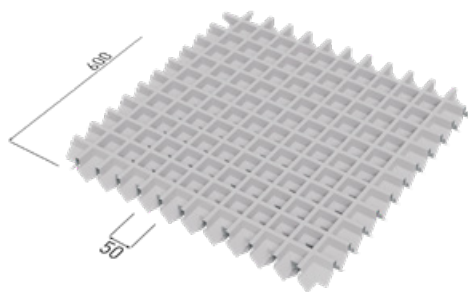
KRAFT pyramidal open cell ceiling is a self-supporting structure made of Y-shaped rails, which are connected to each other using specially stamped locks. The structure is attached to the main ceiling with special hangers. Due to its configuration, these rails cover a larger ceiling space than classic open cell ceilings with the same cell sizes, resulting in metal savings.



### CELL SIZES

Standard cell sizes for KRAFT open cell ceilings, in mm: 50×50, 60×60, 75×75, 86×86, 100×100, 120×120, 150×150, 200×200.

Pyramidal open cell ceilings with cell sizes of 50×50 mm and 60×60 mm are typically chosen for projects with specific requirements.



## TRANSPARENCY AND MAXIMUM VIEWING ANGLE COMPARED TO OTHER TYPES OF OPEN CELL CEILINGS

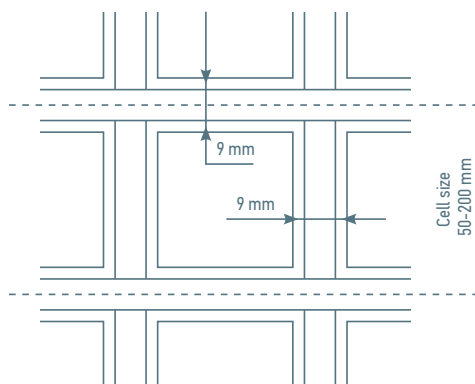
**Transparency**, depending on the cell size, shows the percentage of open space relative to the total ceiling area. Transparency affects the capabilities of ventilation, air conditioning, fire suppression systems, and more.

The **maximum viewing angle** is the angle at which the ceiling is no longer visible through the open cell ceiling.

### INTERNAL CELL SIZES OF DIFFERENT TYPES OF OPEN CELL CEILINGS

Ceiling type / Cell size, mm	50×50	60×60	75×75	86×86	100×100	120×120	150×150	200×200
Classic open cell ceiling	41 mm	51 mm	66 mm	77 mm	91 mm	111 mm	141 mm	191 mm
GLK open cell ceiling	35 mm	45 mm	60 mm	71 mm	85 mm	105 mm	135 mm	185 mm
Pyramidal open cell ceiling	—	7 mm	22 mm	33 mm	47 mm	67 mm	97 mm	147 mm

**CELL SIZE IS MEASURED ALONG THE CENTER AXES, EXCLUDING THE THICKNESS OF THE RAILS.**



### TRANSPARENCY OF DIFFERENT TYPES OF OPEN CELL CEILINGS

Ceiling type / Cell size, mm	50×50	60×60	75×75	86×86	100×100	120×120	150×150	200×200
Classic open cell ceiling	64%	70%	76%	79%	82%	85%	88%	91%
GLK open cell ceiling	49%	56%	64%	69%	72%	77%	81%	86%
Pyramidal open cell ceiling	6%	8%	11%	18%	25%	34%	44%	56%

### THE MAXIMUM VIEWING ANGLE AT WHICH THE CEILING IS NOT VISIBLE THROUGH THE OPEN CELL CEILING

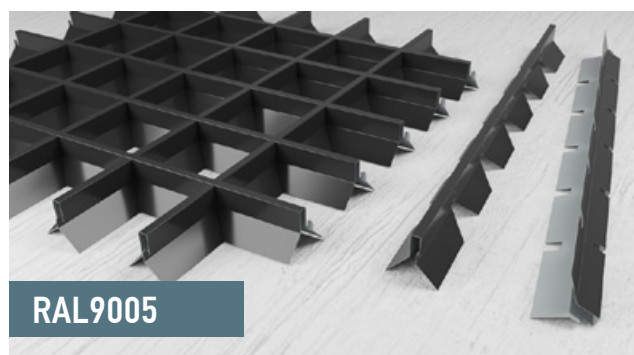
Ceiling type / Cell size, mm	50×50	60×60	75×75	86×86	100×100	120×120	150×150	200×200
Classic open cell ceiling	45°	39°	31°	28°	24°	20°	16°	12°
GLK open cell ceiling	50°	42°	34°	30°	26°	21°	17°	13°
Pyramidal open cell ceiling	85°	59°	43°	37°	31°	25°	20°	14°



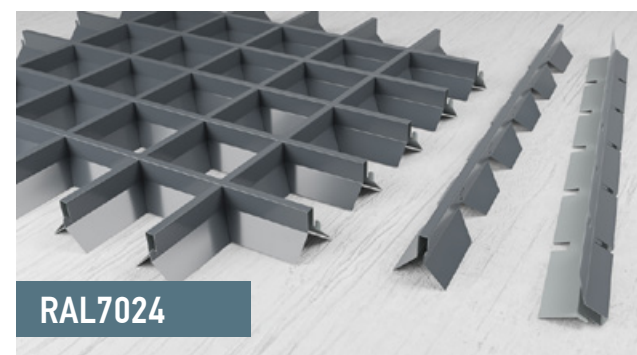
## AVAILABLE COLORS

The basic colors of KRAFT pyramidal open cell ceiling are: RAL 9003 (white), RAL 9005 (black), RAL 9006 (grey metallic), RAL 7024 (graphite grey), RAL 8017 (chocolate).

Custom painting in any color from the RAL palette is also available.



RAL9005



RAL7024



RAL9003



RAL9006



RAL8017

## KRAFT WOOD — WOOD TEXTURE IMITATION

You can order open cell ceiling products with high-quality wood texture imitation.

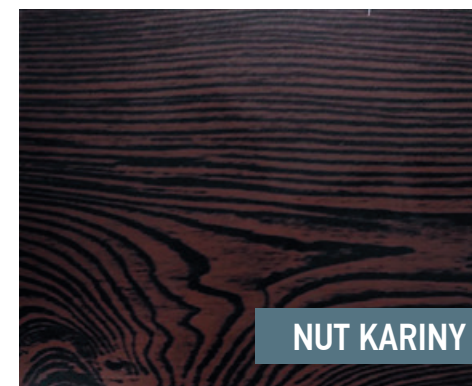
Wood always looks great in interiors, adding natural harmony and a cozy, homely atmosphere to the space.



GIKORY

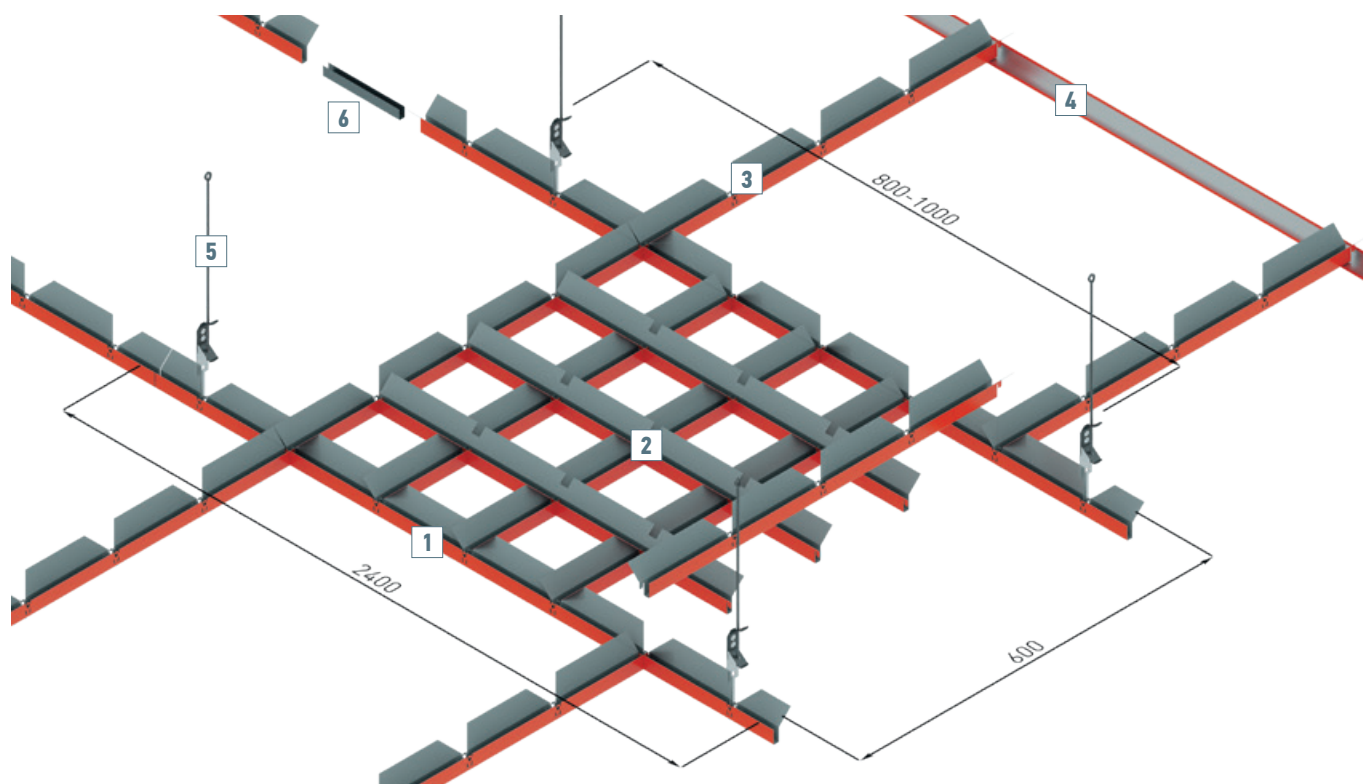


MODRINA



NUT KARINY

## INSTALLATION SCHEME OF THE PYRAMIDAL OPEN CELL CEILING



- 1 Main open cell ceiling profile 2400 mm long.
- 2 Open cell ceiling module (consists of upper and lower profiles 600 mm long).
- 3 Longitudinal open cell ceiling profile 600 mm.
- 4 L-shaped wall angle 3000 mm long.
- 5 Open cell ceiling suspensions.
- 6 Connecting element for the main profiles.

## COMPONENTS OF PYRAMIDAL OPEN CELL CEILING FOR 1 m<sup>2</sup> OF CEILING

Name / Cell size	50×50	60×60	75×75	86×86	100×100	120×120	150×150	200×200
Open cell ceiling module 600×600 mm, pcs.	2,78	2,78	2,78	2,78	2,78	2,78	2,78	2,78
Including:								
Lower profile 600 mm, pcs.	30,58	25,02	19,46	16,68	13,9	11,12	8,34	5,56
Upper profile 600 mm, pcs.	30,58	25,02	19,46	16,68	13,9	11,12	8,34	5,56
Main open cell ceiling profile 2400 mm, pcs.	0,7	0,7	0,7	0,7	0,7	0,7	0,7	0,7
Longitudinal open cell ceiling profile 600 mm, pcs.	2,78	2,78	2,78	2,78	2,78	2,78	2,78	2,78
Connecting element, pcs.	0,7	0,7	0,7	0,7	0,7	0,7	0,7	0,7
Suspension step 1000 mm, set	1,68	1,68	1,68	1,68	1,68	1,68	1,68	1,68
L-shaped wall angle 3000 mm, pcs.	≈ 0,216 (accurate calculation is recommended if you know the perimeter of the room)							

# INSTALLATION INSTRUCTIONS FOR PYRAMIDAL OPEN CELL CEILING

## Step 1

### CEILING MARKING

The level (horizontal line) for the suspended ceiling is determined, and markings for the perimeter L-profile are made. The distance between the suspended ceiling and the main ceiling must be at least 150 mm.



## Step 2

### INSTALLATION OF THE PERIMETER L-PROFILE

The perimeter L-profile (angle) is installed using dowels. The distance between the dowels should be 300-500 mm.



## Step 3

### MARKING AND INSTALLATION OF SUSPENSIONS FOR THE MAIN 2400 MM PROFILE

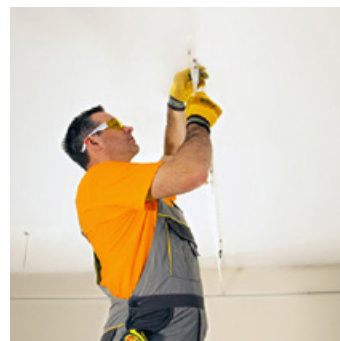
Suspensions are attached to the main ceiling using anchor dowels with a spacing of 800-1000 mm. The suspensions closest to the wall should be installed at a distance of no more than 600 mm from the wall. The suspension consists of an expansion spring and two rods (one with a hook and one with a loop).



## Step 4

### INSTALLATION OF THE FRAME FROM MAIN 2400 MM PROFILES AND LONGITUDINAL 600 MM PROFILES

Secure the main profiles to the suspensions and connect them using connectors. Install the longitudinal profiles between the main profiles.



## Step 5

### ASSEMBLY AND INSTALLATION OF OPEN CELL CEILING CASSETTES

Secure the main profiles to the suspensions and connect them using connectors. Install the longitudinal profiles between the main profiles. Assemble the open cell ceiling cassettes and place them into the installed frame.



## Attention!

THE INSTALLATION CAN BE PERFORMED IN DIFFERENT SEQUENCES — MAKE YOUR DECISION BASED ON YOUR PREFERENCE:

— First, install the frame (step 4) throughout the entire room, and then proceed to install the open cell ceiling cassettes (step 5).

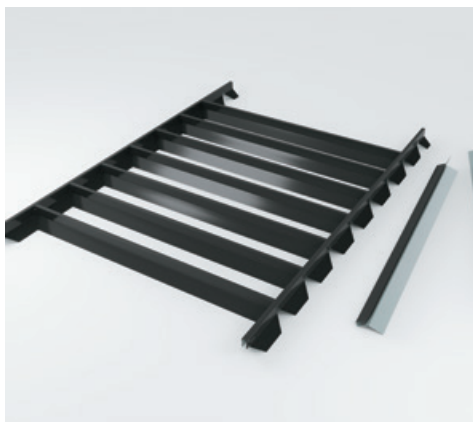
Or:

— Install part of the frame (step 4) and immediately install the open cell ceiling cassettes (step 5) on the installed section. Then proceed with the installation of the next part of the frame, and so on.



## A TYPE OF PYRAMID OPEN CELL CEILING — "BLINDS"

The "blinds" open cell ceiling is a variation of the pyramid open cell ceiling. The cells in the "blinds" open cell ceiling have a rectangular shape rather than square. This effect is achieved by passing individual guides through the overall array.



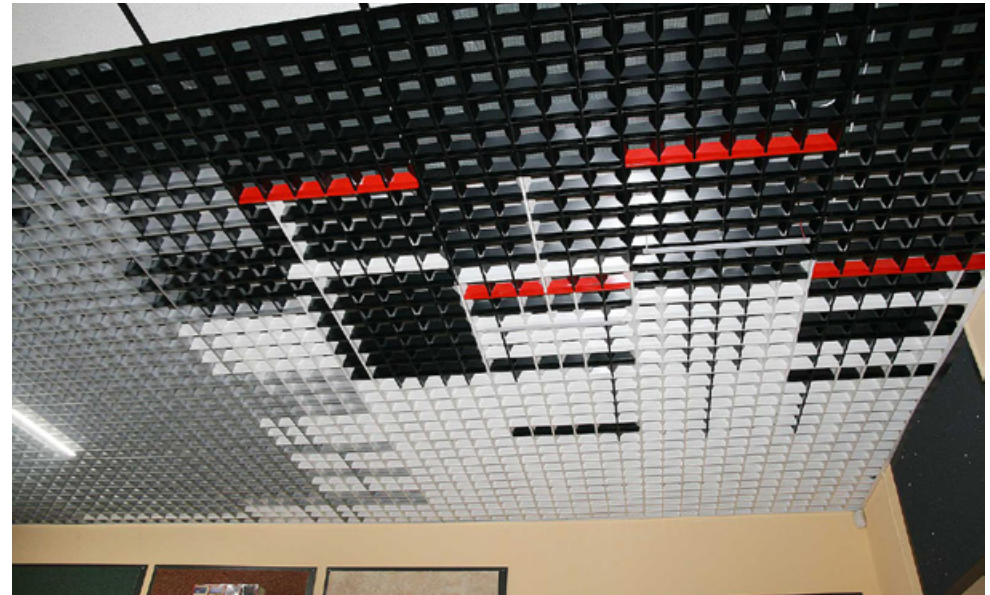




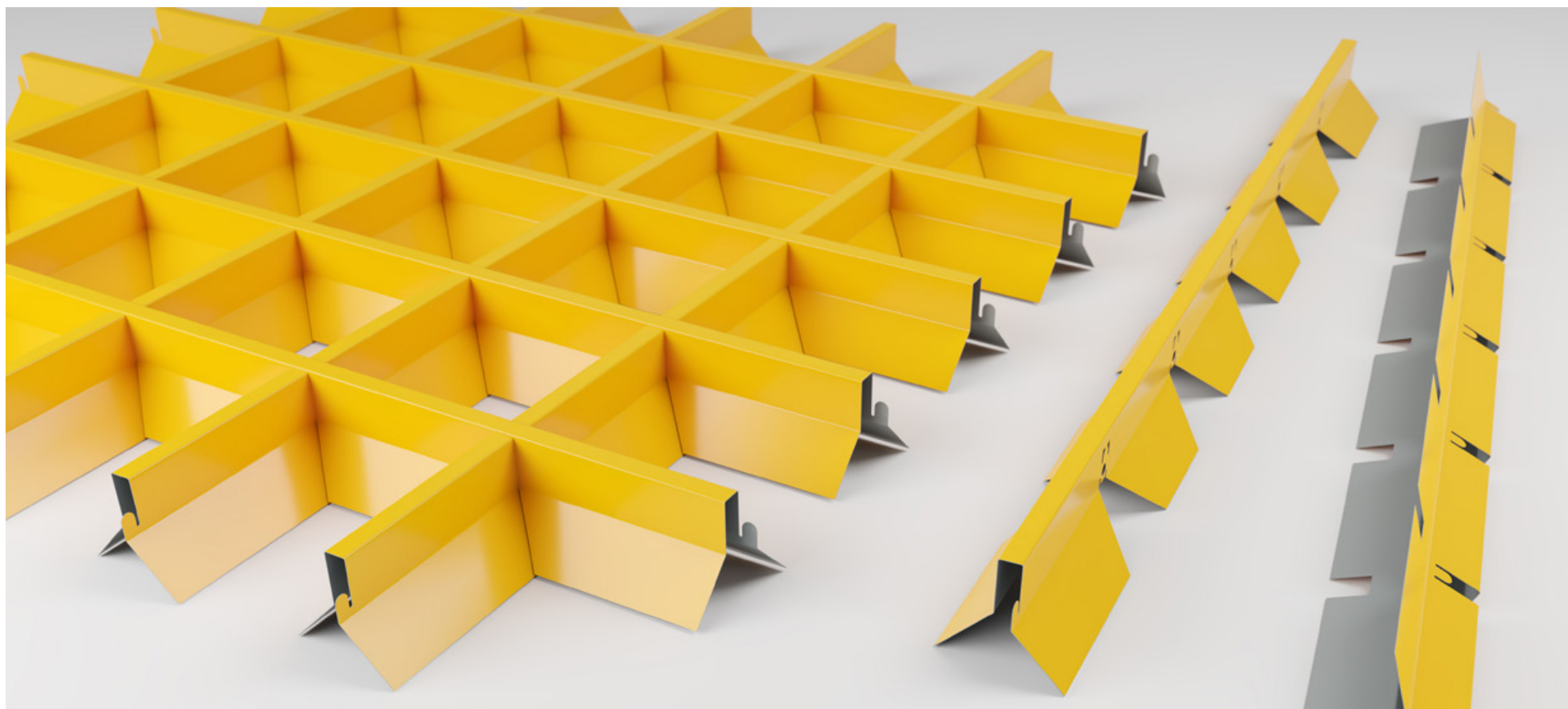








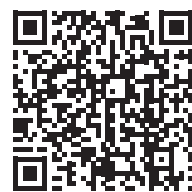




General information  
on the website



Assembly and installation  
on the website



Installation technical card (PDF)



Video instructions for installation





THANK YOU FOR YOUR ATTENTION